

# Aerosol validation in NorESM2

June 10, 2020

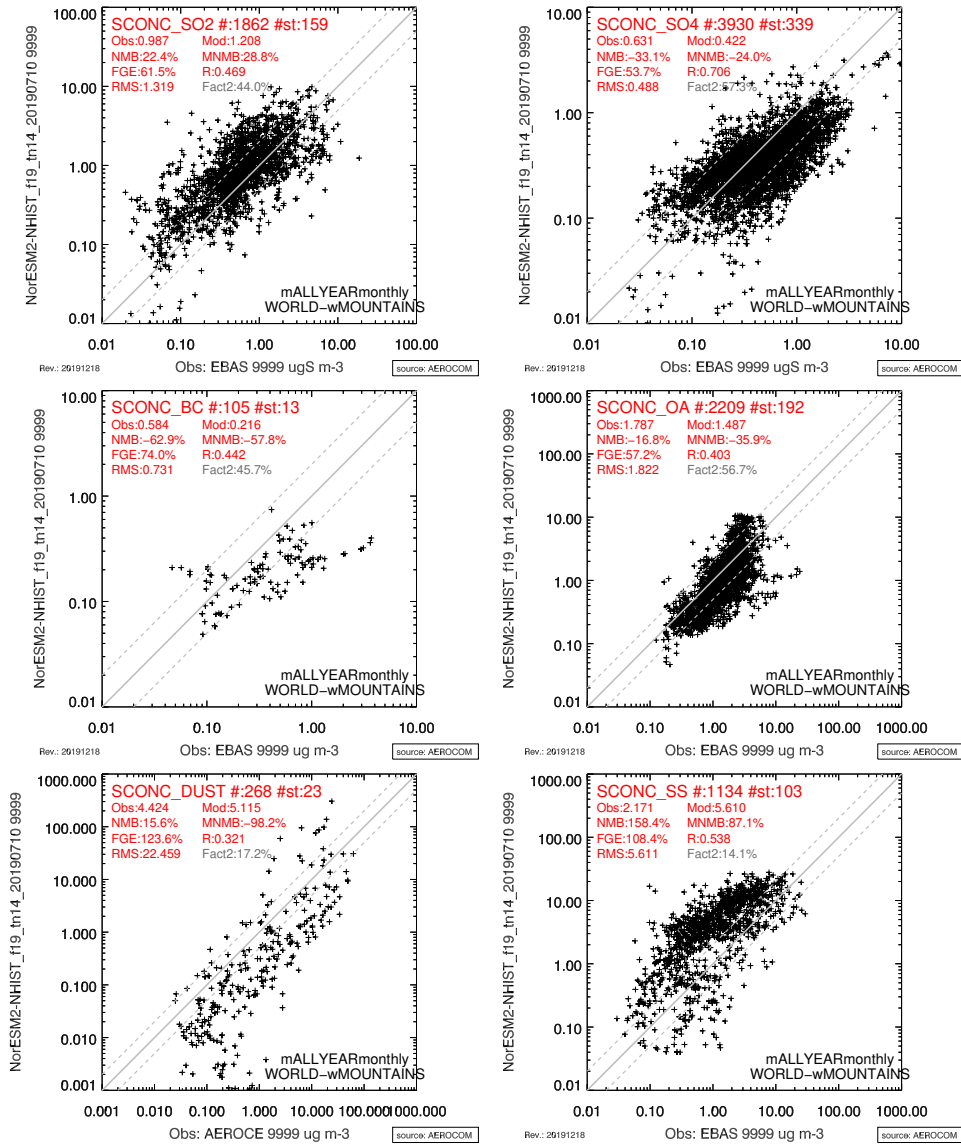


Figure 1 : Surface concentrations in the historical NorESM2-LM simulation (member 1) compared with EBAS and AEROCE data through the AeroCom tools. The data from the model and the observations cover the 2005–2014 period.

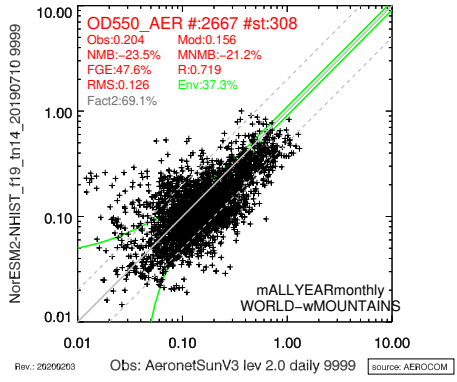


Figure 2 : Aerosol optical depth (at 550 nm) in the historical NorESM2-LM simulation (member 1) compared with Aeronet observations. The data from the model and the observations cover the 2005–2014 period.

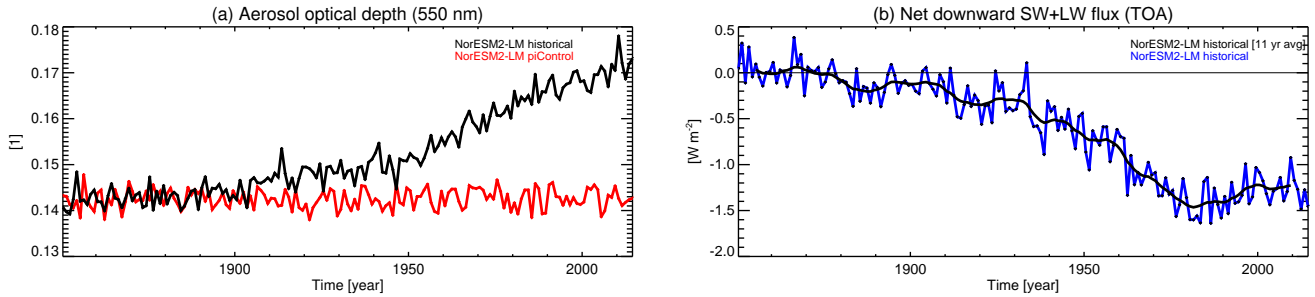


Figure 3 : (a) Timeseries of global mean aerosol optical depth in piControl and historical (member 1) of NorESM2-LM. (b) Timeseries of global mean effective radiative forcing (ERF), calculated as the TOA radiative imbalance in the ensemble-mean (3 members) of AMIP simulations where only anthropogenic aerosol emissions and oxidant concentrations followed the historical evolution.